

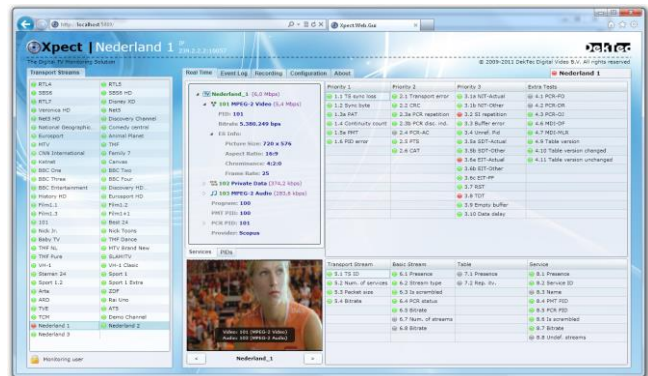


## 24/7 DVB and ATSC Monitoring Solution

- ❑ Fully-featured DTV monitoring solution
- ❑ User-defined template matching
- ❑ Includes advanced Mosaic multi viewer

### FEATURES

- Simultaneous monitoring of multiple DVB or ATSC Transport Streams
- Template matching: checks properties of TS, services, service components, subtitles, SCTE-35 and tables
- Freeze/black frame, audio silence detection
- Capturing of monitored Transport Stream to a file with pre- and post-trigger buffers; client initiated or triggered by a violation
- Full TR 101 290 conformance testing:
  - Priority 1, 2 & 3 (with buffer analysis)
  - PCR AC, FO, DR and OJ
  - MGB bitrate measurement
- Maintains detailed statistical information:
  - Minimum/maximum/average bitrate
  - PCR statistics: AC, FO, DR and OJ
  - Delay Factor and Packet Loss
- SOAP and SNMP interface for remote control and automated access to captured TS files, statistics and error-event database
- Web interface for overall status, RF input status, live video and audio decoding, remote configuration and access to event log
- Event export to CVS file for complete or filtered event log



- Easy integration with 3<sup>rd</sup>-party NMS
- Configuration tool for easy creation of TR 101 290 and template-matching profiles
- Forwarding of any monitored Transport Stream over IP for remote real-time analysis or viewing (if using DTA-2160)

### APPLICATIONS

- 24/7 network supervision
- Automated equipment test and validation
- QoS maintenance: early visibility of faults
- SLA monitoring

### SUPPORTED INPUT ADAPTERS

Signal Type	Supported Adapters
ATSC VSB, ISDB-T	DTA-2131, DTA-2139C
DVB-ASI	DTA-145, 160, 2144, 2145, 2152, 2160, 2172, 2174(B), 2175, 2178(ASI), 2179, 2195, DTE-3120, DTU-225/245*
DVB-S/S2	DTA-2132, 2137, 3137
DVB-T/T2/C/C2	DTA-2131, 2138B, 2139B/C
QAM	DTA-2131, 2136, 2138B, 2139B/C
TS-over-IP	DTA-160, 2160, 2162 Local NIC

\* For evaluation and demos, not recommended for operational use

### KEY ATTRIBUTES

Parameter	Value
Platform	2k12, 2k16, 2k19, 7, 8, 10 64-bit only

\* Requires sufficiently powerful CPU and adequate memory

### ORDERING INFORMATION

Type	Description
DTC-720- <i>n</i> PT	Xpect monitoring, <i>n</i> points: 1/4 point for each radio SPTS; 1/2 point for each TV SPTS; 4 points for each MPTS.

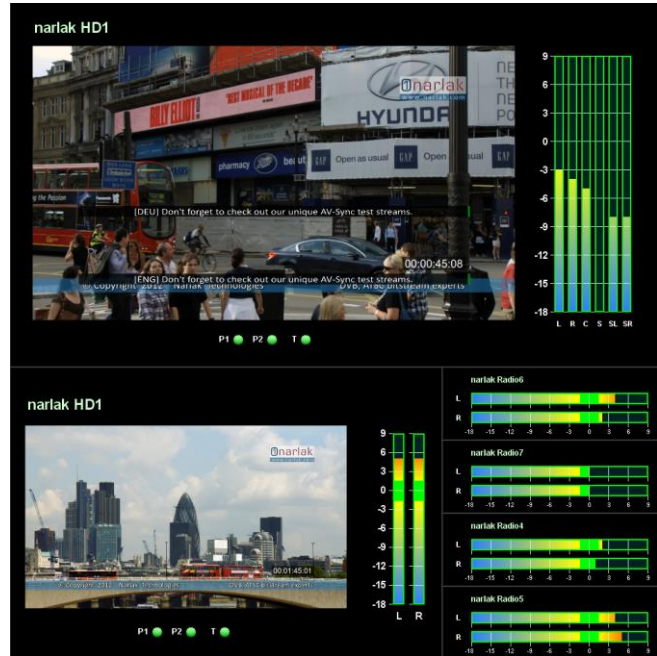


## Audio/Video/Status Multi Viewer

- ❑ Multiple subtitles support
- ❑ Freeze/black frame, audio silence alarms
- ❑ EBU R128 loudness indicators

### FEATURES

- Creates an easy-to-oversee multi viewer display of decoded video, subtitles, audio bars and monitoring status
- Fully customisable multi-viewer solution with drag-and-drop configuration tool, XML templates and SOAP interface
- Multiple decoded DVB subtitles, closed captioning, customisable clock, picture cells with custom updateable contents
- Alarms from the Xpect® monitoring core can be visualized in the mosaic using LED indicators or a red border around the cell
- Graphic card acceleration
- HDMI/DVI/xVGA output or HD-SDI using DekTec's DTA-2152 HD-SDI PCIe card
- Multi-monitor support
- Remote configuration tool for easy definition and uploading of a mosaic
- Software-based solution that runs on standard PC hardware
- Dynamic mosaic updates using SOAP interface, like service switching and text overlay



### APPLICATIONS

- Fully customisable OEM multi viewer
- Control room monitoring

### MONITORED STREAM TYPES

Type	Standard
Video	MPEG-2, AVC/H264
Audio	MPEG-1, MPEG-2, AC-3, (HE-)AAC
DVB subtitles	EN 300 743
Teletext subtitles	ETS 200 706
Closed Captioning	EIA/CEA-608-B
Status	TR 101 290, template, freeze or black frame, audio silence

### KEY ATTRIBUTES

Parameter	Value
Platform	2k12, 2k16, 2k19, 7, 8, 10 64-bit only

\* Requires sufficiently powerful CPU and adequate memory

### ORDERING INFORMATION

Type	Description
DTC-720-nPT	Mosaic functionality is part of the Xpect® product: No extra license points are required