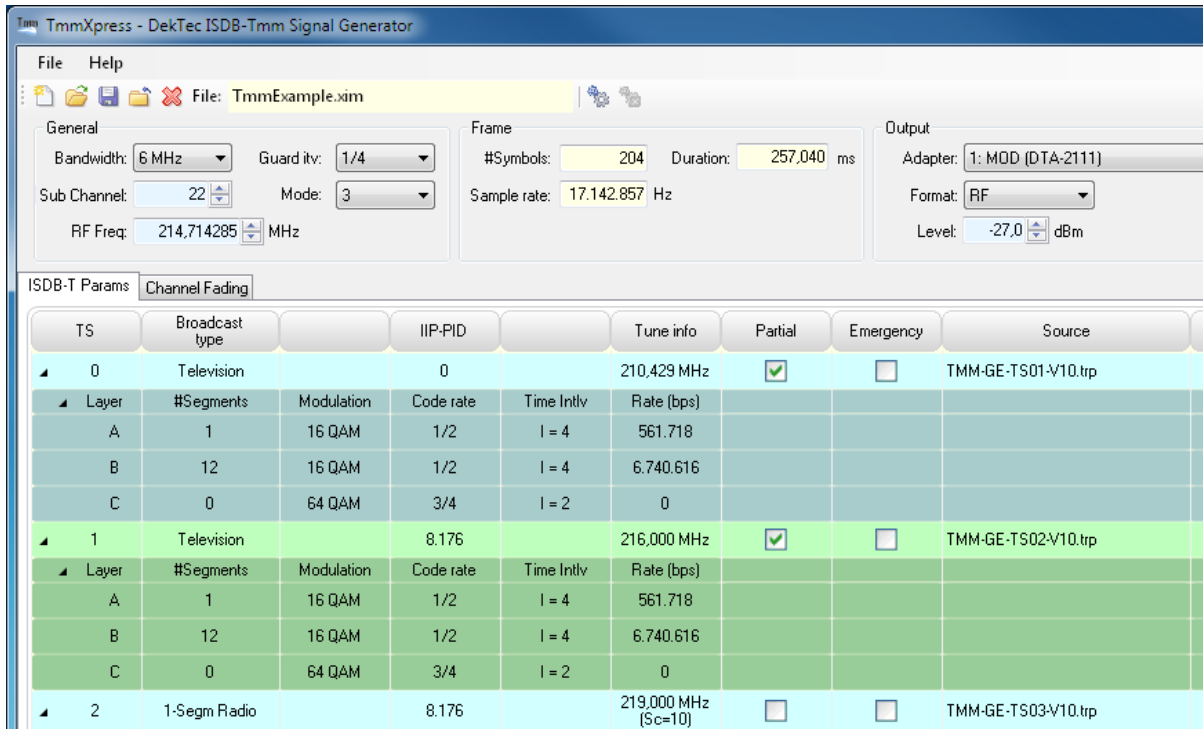


ISDB-Tmm Signal Generator Software

- Generation of ISDB-Tmm/T_{SB}/T signals
- Combining 13-, 3- and 1 segments
- AWGN and multipath simulator option



FEATURES

- Complete ISDB-Tmm, T_{SB} or T modulator compliant to ARIB STD-B46, with file input and RF output on e.g. DTA-2111
- 14.5MHz bandwidth (33 segments) on DTA-2111 and DTA-2115
- With DekTec’s DTC-371-IQ option: Off-line generation of I/Q sample files
- Full user control over the ISDB-Tmm/T_{SB}/T parameters
- Input from Transport-Stream files
- Can be used in conjunction with DekTec’s DTC-305-CM XpressSim channel simulator with AWGN generator (adjustable SNR), multipath fading to accurately simulate reflections

APPLICATIONS

- Test-signal generator for ISDB-T receiver chip development, testing and evaluation
- Signal generator for ISDB-Tmm demonstrations and field trials

SUPPORTED ISDB-Tmm PARAMETERS

Parameter	Range
<i>General</i>	
Bandwidth	6, 7 or 8MHz (14.5MHz for ISDB-Tmm)
Guard interval	1/4, 1/8, 1/16 or 1/32
Mode	Mode1 (2k), Mode 2 (4k) or Mode 3 (8k)
Sub channel	0 .. 42
<i>TS (block of segments)</i>	
Broadcast type	Television, 1-segments radio or 3-segments radio
IIP PID	PID of the IIP
Partial	Yes/No
Emergency	Yes/No
<i>Layer A, B or C</i>	
#Segments	0 .. 13
Modulation	DQPSK, QPSK, 16- or 64-QAM
Code rate	1/2, 2/3, 3/4, 5/6, 7/8
Time interleaving length	Mode 1: 0, 4, 8, 16 Mode 2: 0, 2, 4, 8 Mode 3: 0, 1, 2, 4
<i>Output</i>	
I/Q format*	Float32, Int16, Text
Real time	ISDB-Tmm/T _{SB} /T RF

* I/Q format requires the DTC-371-IQ option

CHANNEL SIMULATION* PARAMETERS

Parameter	Range
AWGN SNR	0 .. 60dB
<i>Fading Paths</i>	
#Paths	0 .. 32
Type	Constant delay Constant Doppler Rayleigh Jakes Rayleigh Gaussian
Attenuation	0 .. 60dB
Phase	0 .. 360°
Doppler (@8MHz)	0.3mHz .. 274kHz (Gaussian) 1.8mHz .. 914kHz (Jakes)

* Requires DTC-305-CM option

PC REQUIREMENTS

Platform	Windows 2k12/2k16/2k19, 7,8,10,11
Processor*	Core i5 minimum Core i7 recommended

*Or equivalent AMD processors

SUPPORTED OUTPUT ADAPTERS

Bus	Adapter
PCI	DTA-111*, 115*, 116*, 117*
PCI-Express	DTA-2111, 2115(B), 2116
USB	DTU-215*, 315

* Limited bandwidth, maximum 13 segments

RELATED PRODUCTS

Type	Description
DTC-305-CM	XpressSim channel-modelling option
DTC-371-IQ	I/Q sample generation option

ORDERING INFORMATION

Type	Description
DTC-382-TMM	TmmXpress ISDB-Tmm signal generator software

Please refer to www.dektec.com for the latest pricing and a list of distributors and resellers.